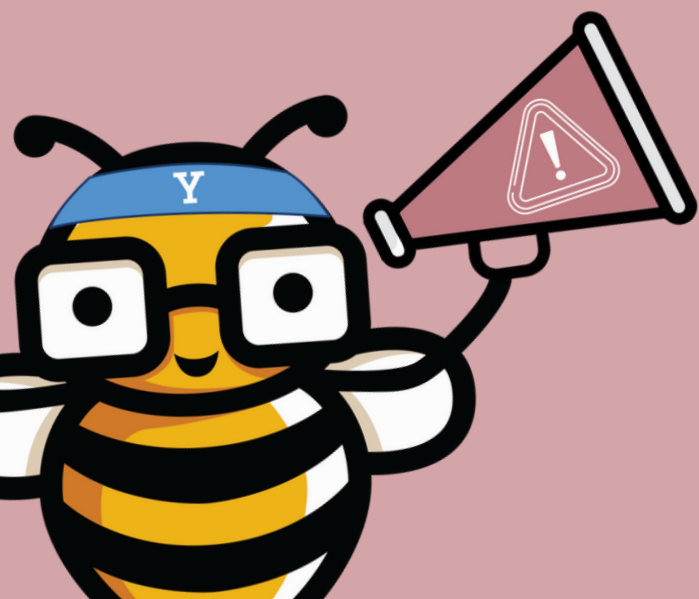


Report Suspicious Cyber Activity

Go with your gut. If something seems unusual or suspicious, don't ignore it or be embarrassed or worried about blame.

Even if what you saw ends up being nothing, it is better to be safe than sorry!



Bee SAFE, Not Sorry

Recognize, report, and respond to cybersecurity incidents with the "Bee SAFE, Not Sorry" model.

See something suspicious

Act quickly

Follow instructions

Exercise discretion

**Contact the Help Desk
or email**

**information.security@yale.edu
for the following:**

Lost or stolen devices

Suspicious emails or activity

Non-urgent questions



**For urgent matters
call 24x7**

203-627-4665

High Risk data has been compromised.

Stolen account credentials.

Pop-up message demanding urgent action.